

PROVA SHOWER® SYSTEM



FOR TILED SHOWERS

- All the components required to build a fully bonded water tight assembly for tiled showers.
- No waiting time between steps; tiles can be installed immediately.
- Protects wall cavities against water and vapour penetration.
- Prefabricated sloped pan eliminates mortar bed, reducing weight and installation time.
- All components sold separately.

32" x 60" (82cm x 152cm)

Available in both PVC and ABS



Also Available in PVC

A complete, easy to install
WATERPROOFING SYSTEM
for maintenance-free tiled showers

- | | |
|--------------------------|----------------------|
| A. PROVA PAN | E. PROVA JOINT strip |
| B. PROVA-MAT floor panel | F. PROVA CORNER |
| C. PROVA DRAIN | G. PROVA DRAIN GRATE |
| D. PROVA-MAT | |

Now includes the **EXCLUSIVE**
to our ProVa Shower Systems

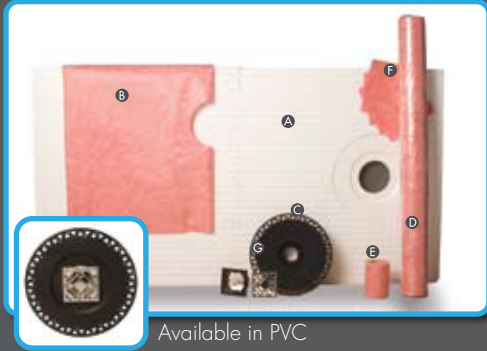
PROVA BOND™
Surface Treatment



For more information please contact us
Tel: 1 (800) 565-6653
www.provaproducts.com

PROVA SHOWER® SYSTEM

FOR TILED SHOWERS Available in Both PVC and ABS



Available in PVC

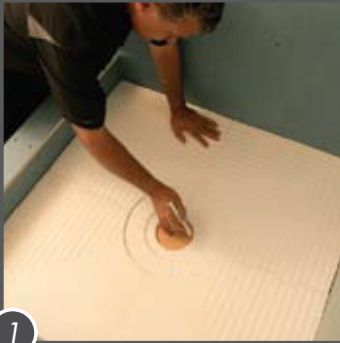
All the components necessary to build a fully bonded watertight assembly for tiled showers

- A. PROVA-MAT
- B. PROVA JOINT strip
- C. PROVA DRAIN GRATE
- D. PROVA DRAIN
- E. PROVA-MAT floor panel
- F. PROVA PAN
- G. PROVA CORNER

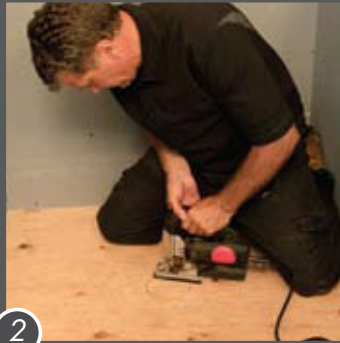
Now includes the **EXCLUSIVE** to our ProVa Shower Systems

PROVA BOND™
Surface Treatment

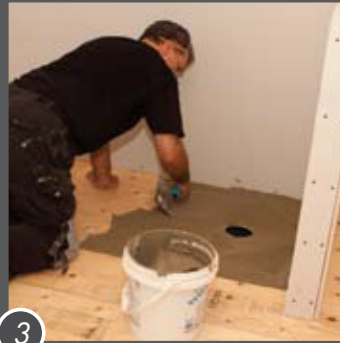
Installation Highlights: For representative purposes only. Please consult ProVa Shower System technical literature for complete installation instructions.



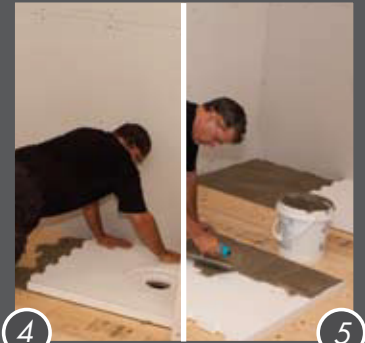
1



2

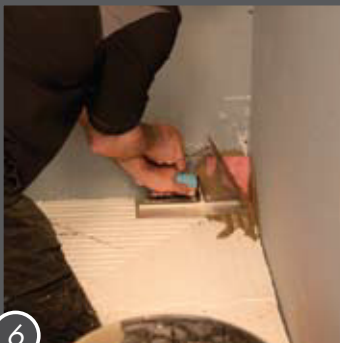


3

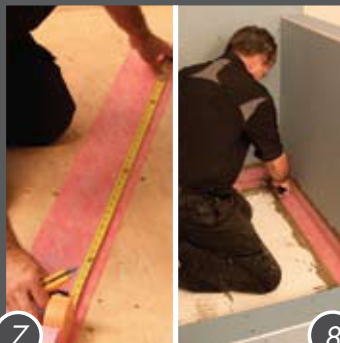


4

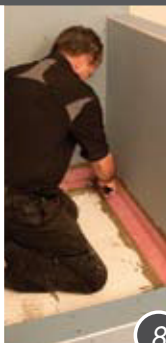
5



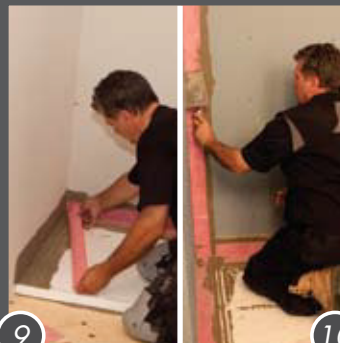
6



7



8

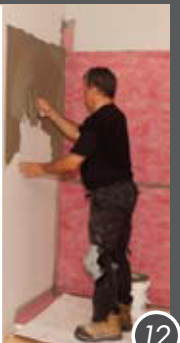


9

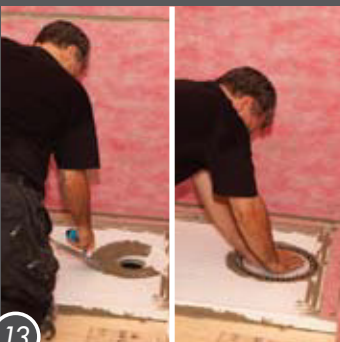


10

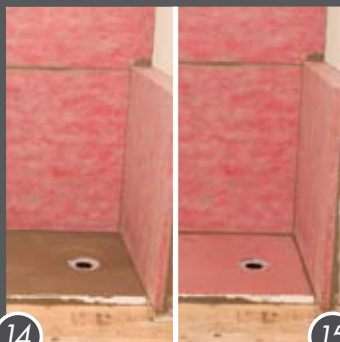
11



12



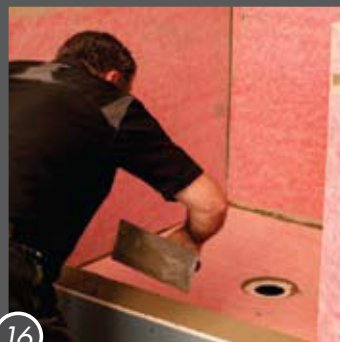
13



14



15



16



17



5720 Ambler Drive
Mississauga On. L4W 2B1
Tel: 1 (800) 565-6653
www.provaproducts.com