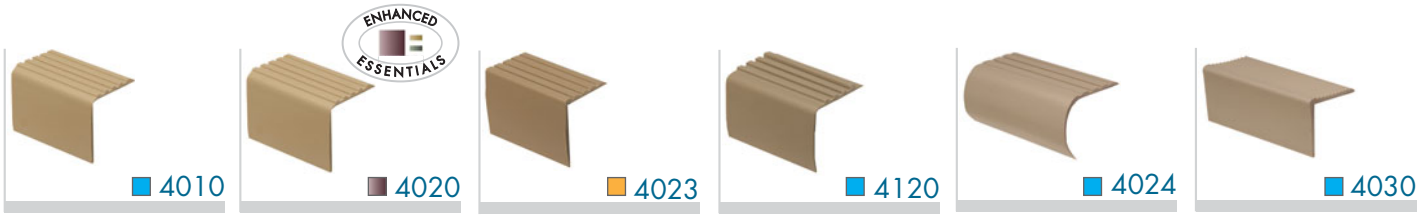


SECTION 1

VINYL STAIR NOSINGS



1-5/8" Drop Overlap Nosing. Used over vinyl tile or resilient flooring. Protects edge of floor covering from damage at step face and provides extra traction for safety.
Length: 12ft
Pieces/Tube: 10pcs

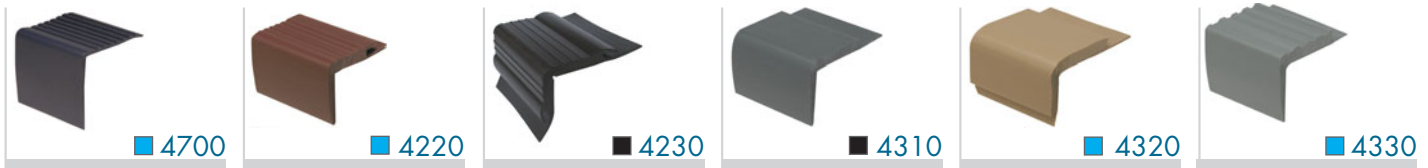
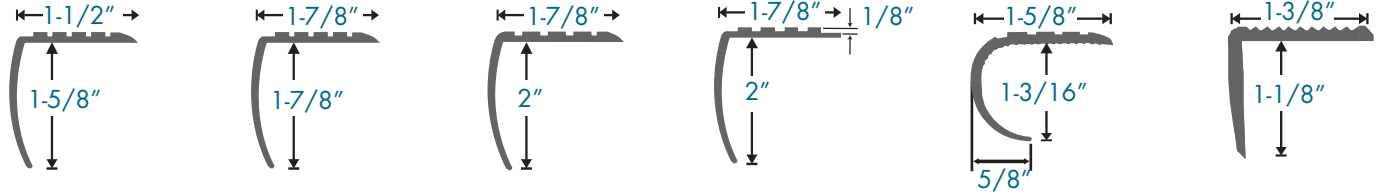
1-7/8" Drop Overlap Nosing. Used over vinyl tile or resilient flooring. Protects edge of floor covering from damage at step face and provides extra traction for safety.
Length: 12ft
Pieces/Tube: 10pcs

2" Drop Overlap Nosing. Used over vinyl tile or resilient flooring. Protects edge of floor covering from damage at step face and provides extra traction for safety.
Length: 12ft
Pieces/Tube: 12pcs

2" Drop Butt-Type Nosing. Used to butt up to 1/8" tile or resilient floor. Protects edge of floor covering from damage at step face and provides extra traction for safety.
Length: 12ft
Pieces/Tube: 10pcs

Bull Nose designed to be used with round nosed stairs. Flexible round nose allows for easy installation. 5/8" return helps to hide underside of stair.
Length: 12ft
Pieces/Tube: 10pcs

Square Nose covers and protects leading edge of stairs. Use over vinyl and sheet goods. Excellent slip resistance. Smaller profile nosing provides a clean finished edge.
Length: 12ft
Pieces/Tube: 10pcs



Overlap Nosing
This Rubber/Vinyl composite nosing has large 2-1/2" x 2-1/2" legs to help cover damaged area or stairs with unusually large drops.
Length: 12ft
Pieces/Tube: 10pcs

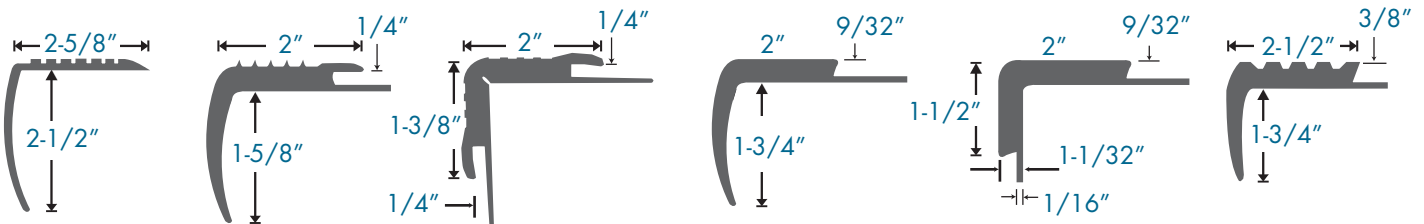
1-5/8" Drop Commercial friction-type insert nosing. For carpet or tile up to 3/8" thick.
Length: 12ft
Pieces/Tube: 6pcs

1-3/8" Drop not including flange commercial friction-double insert nosing. For carpet or tile up to 3/8" thick. Also available with abrasive strip. Notched for easy installation.
Length: 12ft
Pieces/Tube: 6pcs

1-3/4" Drop Commercial Single Butt-Type Nosing. For butting up to 1/4" tile or up to 30 oz. carpet.
Length: 12ft
Pieces/Tube: 6pcs

Double Butt Nosing. For butting up to carpet or tile. For use when flooring is installed on both step and riser.
Length: 12ft
Pieces/Tube: 6pcs

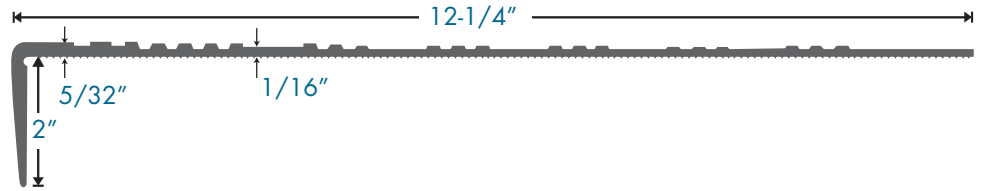
1-3/4" Drop Commercial Nosing. Designed to butt to 3/8" ceramic tile, providing excellent traction.
Length: 12ft
Pieces/Tube: 5pcs



- Available in all 36 colors
- Available in all 18 ESSENTIALS colors
- Available in 8 colors (Black, Brown, Beige, Grey, Charcoal, Medium Grey, Sable & Fawn)
- Available with special order only
- Available in 4 colors (Beige, Black, Brown & Grey)
- Available in Black only



5010, 5010SA,
5010DA ABRASIVE INSERT



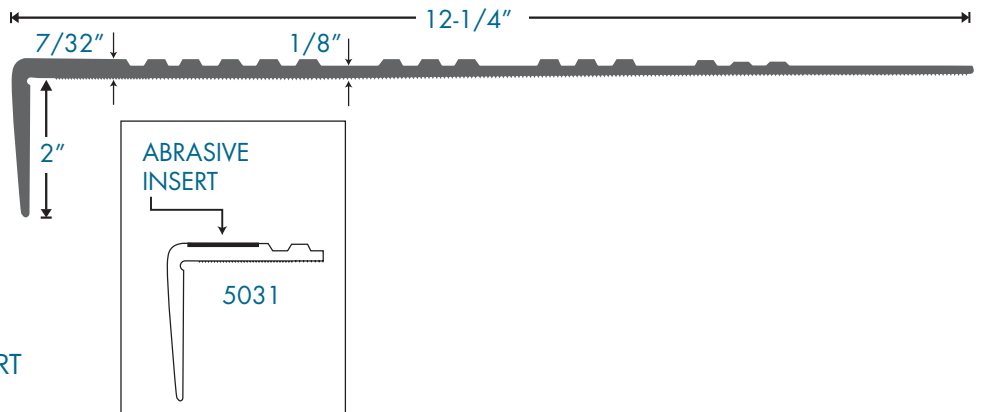
5010 5010SA/5010DA ABRASIVE INSERT

Standard duty Stair Tread to suit most commercial applications.
Safety grip top rib pattern.
Available with single abrasive insert. Specify part #5010SA.
Available with double abrasive inserts. Specify part # 5010DA.

5010	5010SA/5010DA
Length: 2ft, 3ft, 4ft, 12ft	Length: 12ft
Pieces/Carton: 5pcs	Pieces/Carton: 5pcs



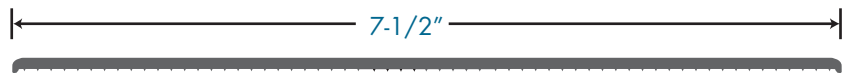
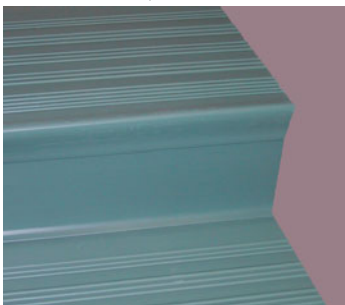
5030, 5030SA
ABRASIVE INSERT



5030 5030SA ABRASIVE INSERT

Heavy duty Commercial Stair Tread.
Safety grip top rib pattern.
Available with one abrasive insert.
Specify part #5030SA.
Easy flex leg for set back risers.

5030	5030SA
Length: 2ft, 3ft, 4ft, 12ft	Length: 12ft
Pieces/Carton: 5pcs	Pieces/Carton: 5pcs



5080

7-1/2" Stair Riser.
6" Base may also be used as Stair Riser.
Length: 60ft
Pieces/Carton: 1 roll

ARCHITECTS' MATERIAL SPECIFICATION

ALL RUBBER/ VINYL STAIR TREADS supplied under this specification shall be Loxscreen RUBBER/VINYL STAIR TREADS and are designated as (Specify 5010, 5030, 5030SA, 5010SA, or 5010DA for SAFETY GRIPS), and shall have a square nose that is 2" long as measured from the bottom of tread. The width of the tread shall be 12-1/4" and a length of (Specify length up to 12 feet). The color shall be . (Specify color from Loxscreen Color Chart). The Stair Tread will be installed using only premium adhesives specifically designed to be used with stair treads and vinyl compatible. 5010 and 5030 are in full compliance with Federal Specification RR-T-650 E, Composition B, Type 2 dated February 25, 1994 superseding RR-T-650D, September 22, 1988.

- Available in all 36 colors
- Available in all 18 ESSENTIALS colors
- Available in 8 colors (Black, Brown, Beige, Grey, Charcoal, Medium Grey, Sable & Fawn)
- Available with special order only
- Available in 4 colors (Beige, Black, Brown & Grey)
- Available in Black only